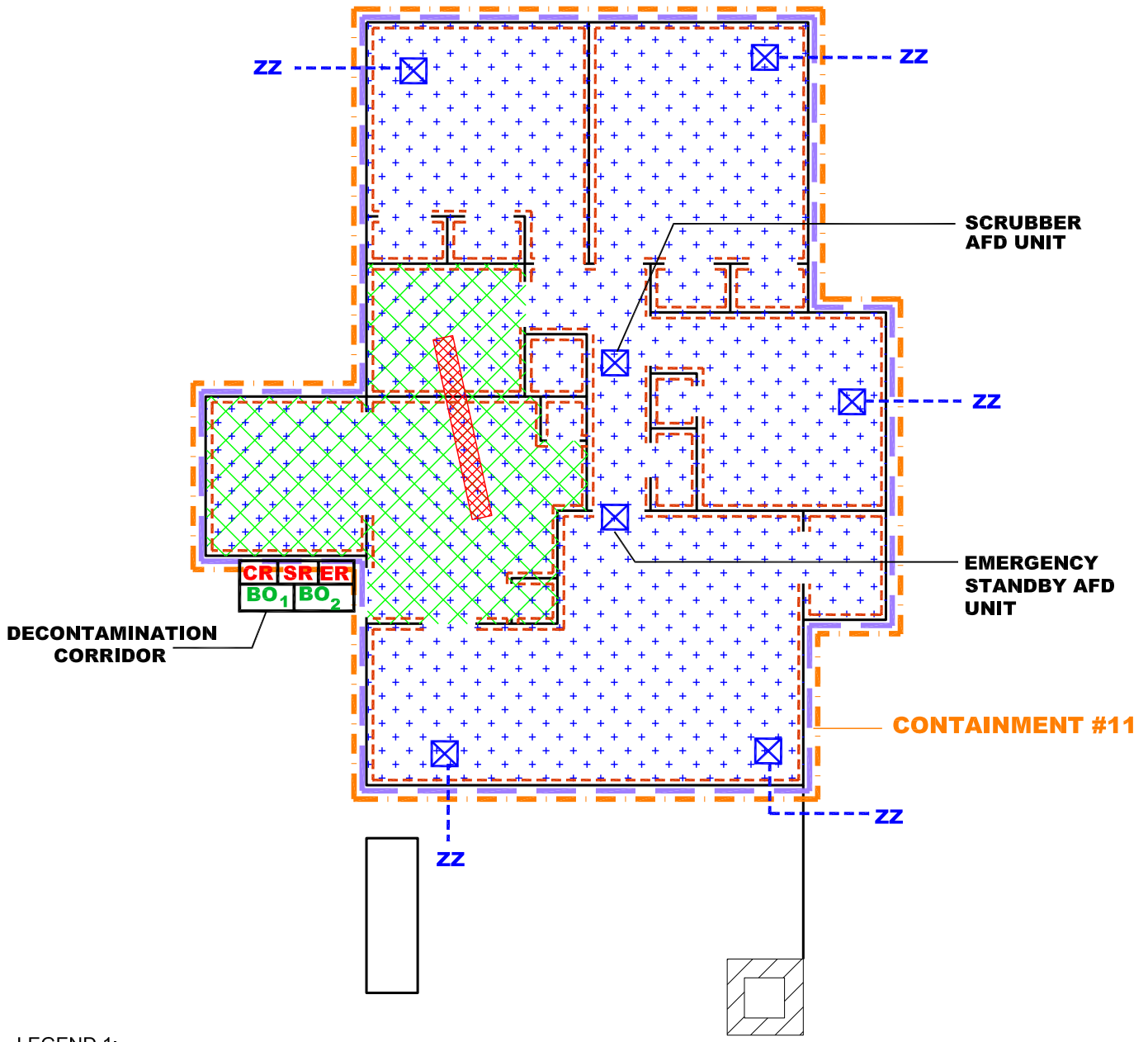

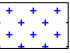





file name: C:\drawings\BENAS\BA-12-1046.dwg



LEGEND 1:

-  ACM Wall Texture & Joint Compound to be removed (approx. 3,376 SF)
-  ACM Ceiling Texture & Joint Compound to be removed (approx. 1,221 SF)
-  ACM Flooring Materials to be removed (approx. 233 SF)
-  ACM TSI in crawlspace to be removed (approx. 85 LF)
-  ACM Transite Siding Panels to be removed (approx. 1,693 SF)

LEGEND 2:



-  Containment Barrier #9
-  Air Filter Device (AFD)
-  AFD Exhaust Route
- ER** Equipment (dirty) Room
- SR** Shower Room
- CR** Clean Room
- BO₁** Waste Bags Wash Down Room
- BO₂** Double Bagging of Waste Room

FIGURE 11

Asbestos-Containing-Materials Abatement

Single Family Residence
 21 Carswell Street (TSTC Campus)
 3801 Campus Drive
 Waco, Texas 76705

BENAS Project No.: BA-12-1046



ENVIRONMENTAL CONSULTANTS
 324 CROOKED TREE COURT
 COPPELL, TEXAS 75019

PHONE: (972) 393-0128 FAX: (972) 393-0793

HATCHING & LOCATIONS FOR ASBESTOS-CONTAINING MATERIALS TO BE REMOVED

Prepared for: Texas State Technical College (TSTC)
 Attention: Mr. Mike Ratcliff, Project Manager

Prepared by: Ephraim Okotcha "EO"
 TDSHS Licensed Asbestos Consultant No.: 10-5399